

Picasso



"Paysage, vue d'un village XXXVII"  
*Landscape view of a village 1937*

by:

**Pablo Picasso?**



TITLE:

Paysage, vue d'un village XXXVII

Landscape view of a village 1937



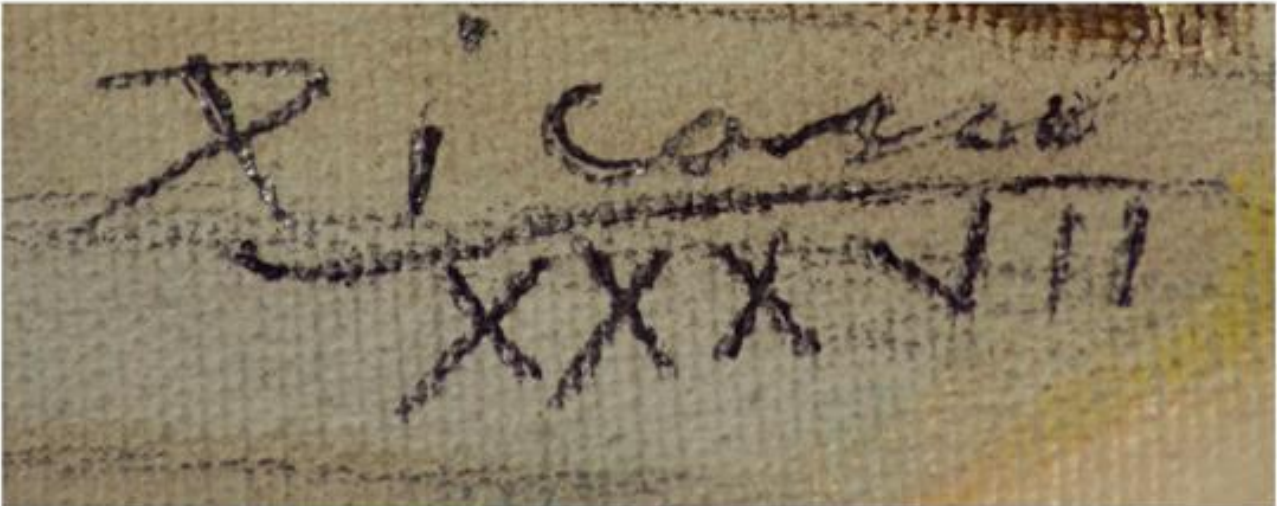
Painting is an oil on canvas and measures 15" wide x 12-1/2" tall.







Above shows ink signature only - with underlying pencil signature digitally removed.



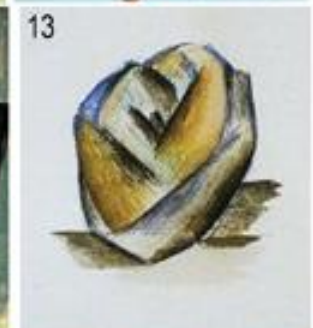
Pablo Picasso (1881-1973) was a Spanish painter, sculptor, printmaker, ceramicist, and stage designer. One of the greatest and most influential artists of the 20th century, he is widely known for co-founding the Cubist movement.

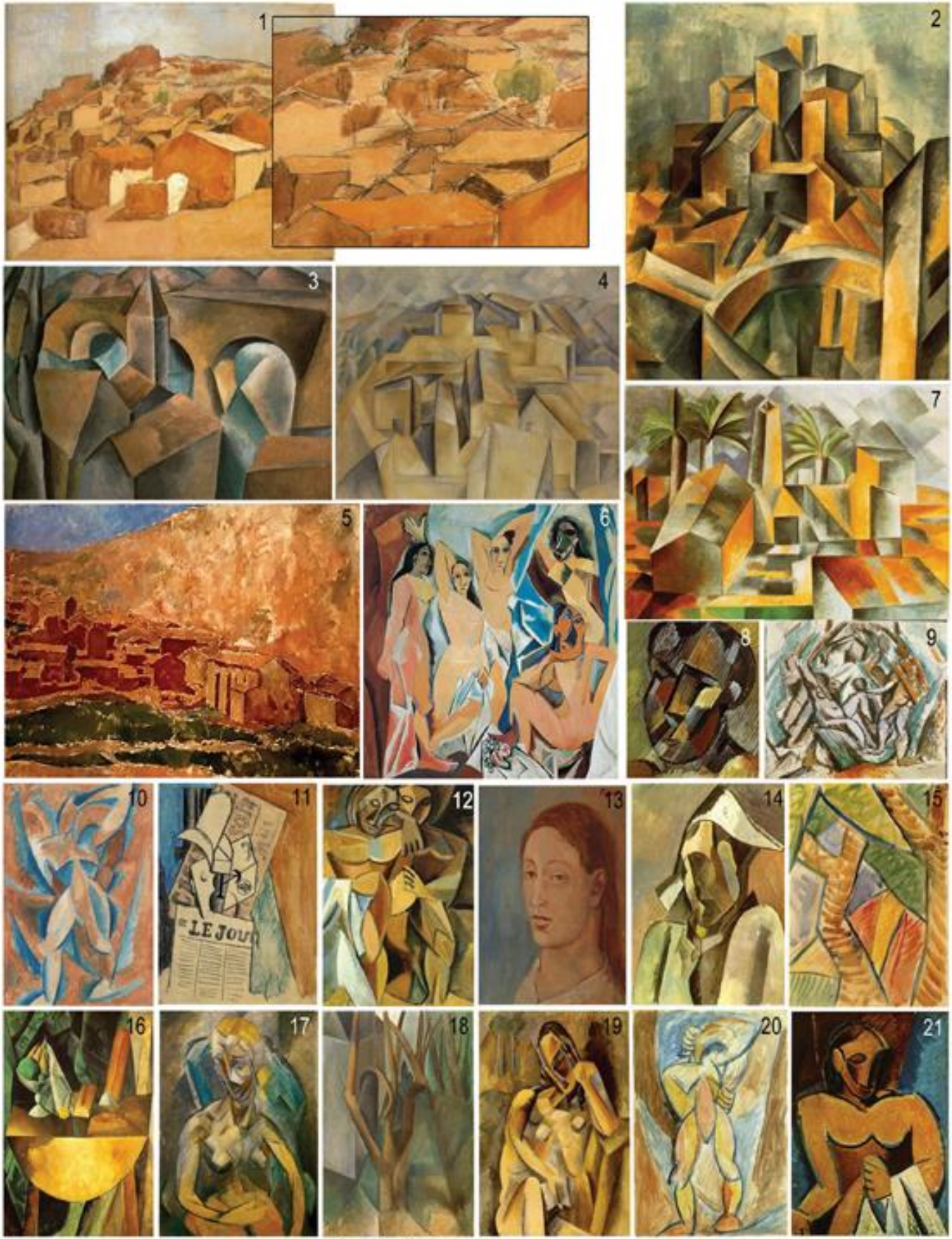
Below: Picasso signatures that are similar to our painting.



Below: Pieces by Picasso that appear to have unfinished areas.





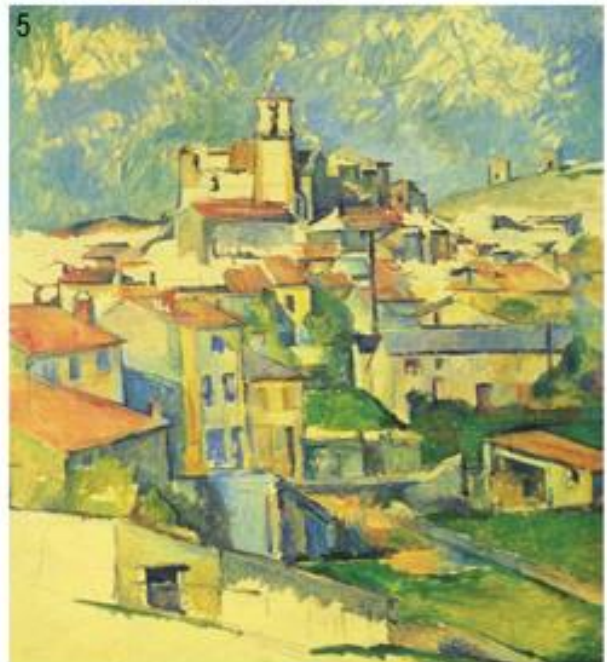




## The Paul Cézanne Influence

According to his Wikipedia page, Paul Cézanne (1839–1906) was a French artist and Post-Impressionist painter. Cézanne can be said to form the bridge between late 19th century Impressionism and the early 20th century's new line of artistic enquiry, Cubism. The line attributed to both Matisse and Picasso that Cézanne "is the father of us all" cannot be easily dismissed.

Cézanne's work demonstrates a mastery of design, colour, tone, composition and draughtsmanship. His paintings convey Cézanne's intense study of his subjects, a searching gaze and a dogged struggle to deal with the complexity of human visual perception.



## The Georges Braque Influence

According to his Wikipedia page, Georges Braque (1882 – 1963) was a major 20th century French painter and sculptor who, along with Pablo Picasso, developed the art style known as Cubism. In 1907, poet Guillaume Apollinaire introduced Georges and Picasso, both of whom were deeply influenced by Cézanne.



## The André Derain Influence

According to his Wikipedia page André Derain (1880 - 1954) was a French artist, painter, sculptor and co-founder of Fauvism with Henri Matisse. While Derain was a fundamental leader in the Fauve style, he often bounced from one style to another, from Fauvism, to Cubism to African art and towards the end of his career, Classicism.

In 1907 art dealer Daniel-Henry Kahnweiler purchased Derain's entire studio, granting Derain financial stability. He experimented with stone sculpture and moved to Montmartre to be near his friend Pablo Picasso.

**Below:** Three paintings by Derain which display similar buildings and possibly the same location of our painting.

